

Product Selector

		Hold-Open Door Control 130° Backstop, 90° Hold-Open		Non-Hold-Open Door Control 130° Backstop	
Configurations	Side Load Arm with DP Pivot		2803.H.SL		2803B.SL
	End Load Arm with AP Pivot	2803.H.EL		2803B.EL	
Features	Closer Size	2 – 4	2 – 4	2 – 4	2 – 4
	Method of Force Adjustment	Wind-through	Wind-through	Wind-through	Wind-through
	Maximum Door Width	1100mm	1100mm	1100mm	1100mm
	Maximum Door Weight	80kg	80kg	80kg	80kg
	Opening Requirements	Double or Single-Action	Double or Single-Action	Double or Single-Action	Double or Single-Action
	Size (Length x Height x Depth)	305 x 38 x 94mm	305 x 38 x 94mm	305 x 38 x 94mm	305 x 38 x 94mm
	Cylinder Material Construction	Cast Iron	Cast Iron	Cast Iron	Cast Iron
	Piston Diameter	28.5mm	28.5mm	28.5mm	28.5mm
	Heat Treated Forged Steel Piston	•	•	•	•
	All Weather Fluid	•	•	•	•
	Maximum Angle of Opening	130°	130°	130°	130°
	Angle of Hold-Open	90°	90°		
	Retained Valves	•	•	•	•
	Adjustable Closing and Latch Speed	•	•	•	•
	Cover Plate for Timber Applications	Optional	Optional	Optional	Optional
	Easy to Read Instructions	•	•	•	•
Components and Spares	Warranty	5 years	5 years	5 years	5 years
	Cylinder	2803.M.H	2803.M.H	2803.B.M	2803.B.M
	Side Load Arm and DP Pivot Kit	2800.SLP	2800.SLP	2800.SLP	2800.SLP
	End Load Arm and AP Pivot Kit	2800.ELP	2800.ELP	2800.ELP	2800.ELP
	Cover Plate	2800.CPT.SE	2800.CPT.SE	2800.CPT.SE	2800.CPT.SE

Product specifications subject to change without notice



Ingersoll Rand Security Technologies - Australia

National Customer Services Phone 1800 098 094
National Customer Services Fax 1800 098 095

Customer Services Email cust.serv@ingersollrand.com.au
Website www.ingersollrand.com.au

Melbourne

PO Box 346, Sunshine
16-20 Third Avenue, Sunshine, VIC 3020
Phone 03 9312 2822
Fax 03 9312 5981

Adelaide

PO Box 658, Glenside
65D Dulwich Avenue, Dulwich, SA 5065
Phone 08 8431 4760
Fax 08 8431 4759

Sydney

PO Box 404, North Ryde, 1670
Unit 2, 47 Epping Road, North Ryde NSW 2113
Phone 02 8875 1500
Fax 02 9889 3288

Brisbane

PO Box 2178, Logan City, QLD 4114
64 Parramatta Road, Underwood, Brisbane QLD 4119
Phone 07 3208 8900
Fax 07 3208 9477

Perth

PO Box 1238, Osborne Park, WA 6916
Phone 1800 098 094
Fax 1800 098 095

Ingersoll Rand Security Technologies - New Zealand

National Customer Services Phone 0800 477 869
National Customer Services Fax 0800 477 868

Customer Services Email nz_custserv@ap.irco.com
Website www.ingersollrand.co.nz

Auckland

PO Box 19-347, Avondale 1746
437 Rosebank Road, Avondale, Auckland 1026
Phone 09 829 0550
Fax 09 829 0552

Christchurch

PO Box 10 027, Phillipstown 8145
Unit 7/211 Ferry Road, Christchurch 8011
Phone 0800 477 869
Fax 03 366 3152

Wellington

PO Box 51 297, Tawa 5249
Suite 3, 194 Main Road, Tawa, Wellington 5028
Phone 0800 477 869
Fax 04 232 6762

Briton[®]

2800 Series



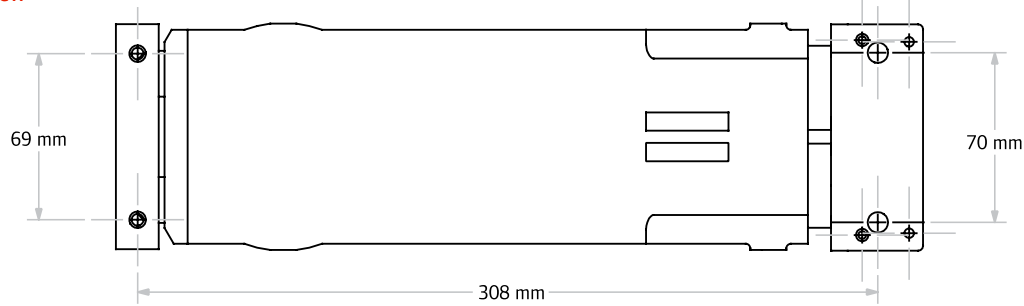
Ingersoll Rand’s Security Technologies Sector is a leading global provider of products and services that make environments safe, secure and productive. The sector’s market-leading products include electronic and biometric access-control systems, time-and-attendance and personnel scheduling systems; mechanical locks; portable security; door closers, exit devices, architectural hardware, automated openings, and steel doors and frames; and other technologies and services for global security markets.

Transom Concealed Door Closers

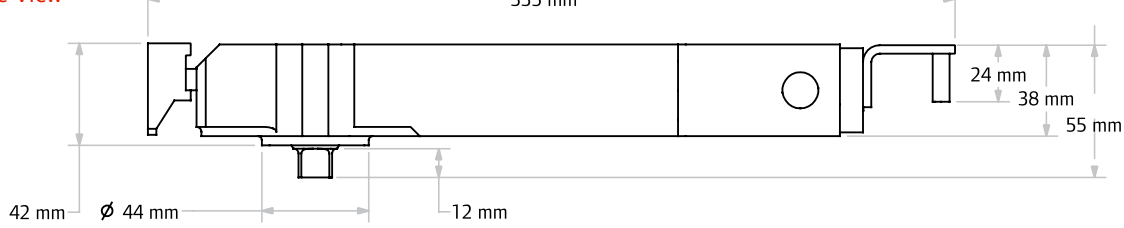
Briton overhead concealed door closers offer an aesthetically pleasing way to control a door opening. They are suitable for a wide range of both interior and exterior applications, including aluminium, timber, and hollow metal doors and frames. In addition to providing years of maintenance-free operation, the Briton 2800 Series is Easy to Select, Easy to Install, and Easy to Bundle with other Ingersoll Rand hardware.

- Fully adjustable (2–4) without compromising accessibility
- Durable cast iron construction ensures product longevity
- Non-handed wind-through adjustable for easy on-site door installation
- Fits inside standard header for aesthetics and minimizes vandalism
- Easy to read instruction sheets for easy and accurate installation
- Optional 90° hold-open to ease accessibility on non-fire doors
- 5-year Warranty for peace of mind

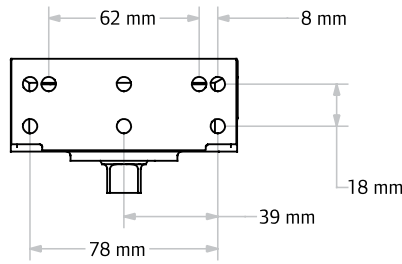
Top View



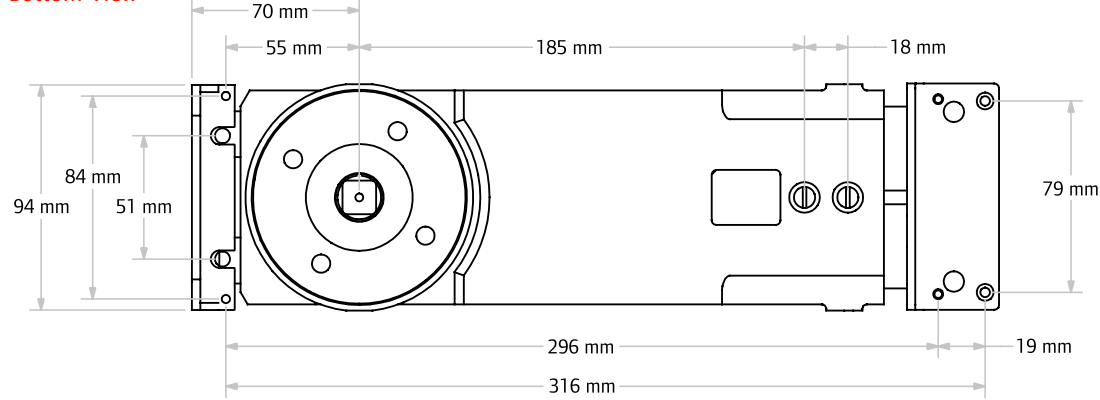
Side View



End View



Bottom View

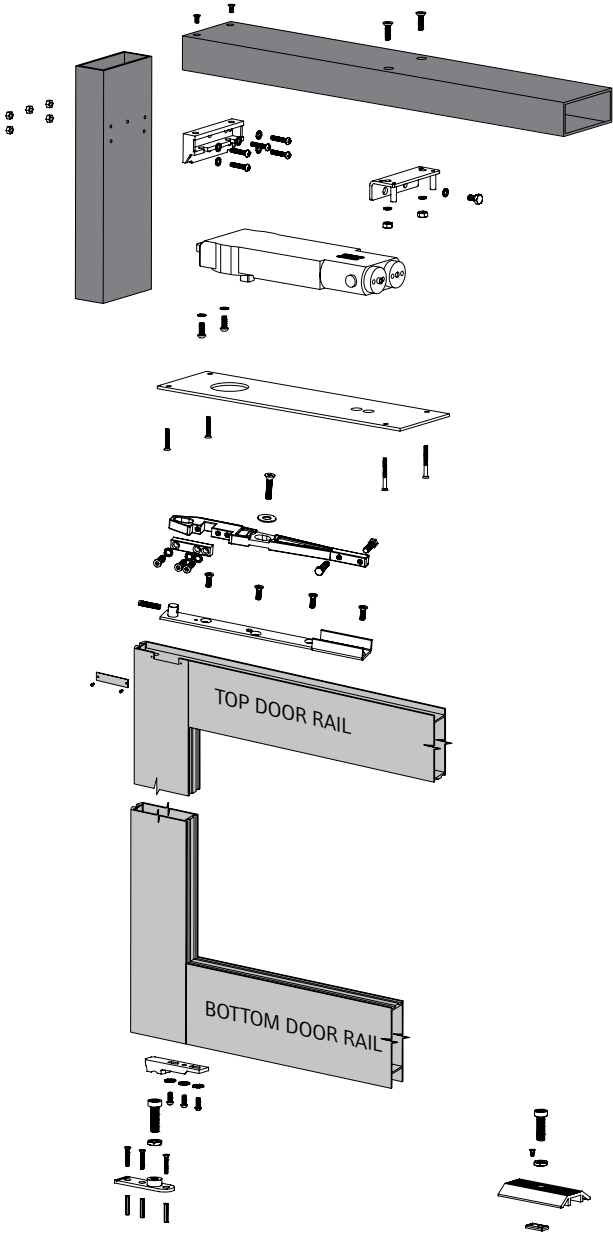


Mounting Application

Aluminium Door and Frame

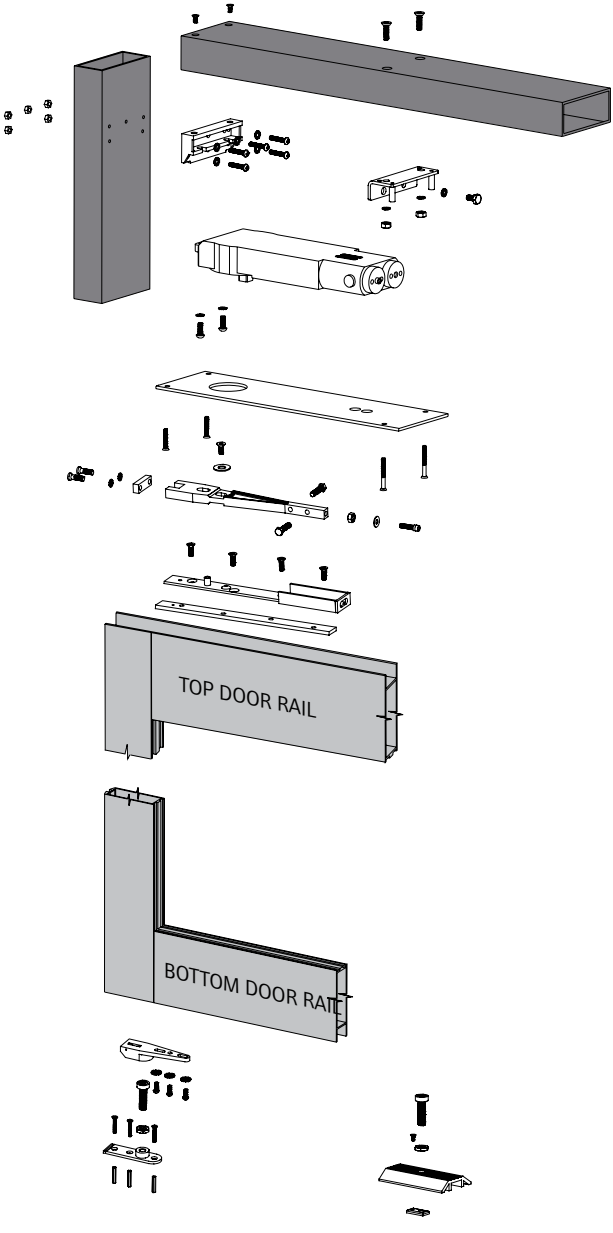
Side Load

Double or Single-Action
Aluminium Door and Frame
16 mm Top Rail



End Load

Double or Single-Action
Aluminium Door and Frame
16 mm Top Rail

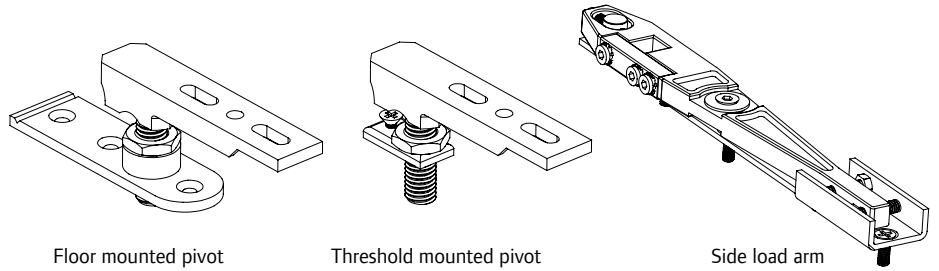


Spares & Accessories

Components below are supplied as standard on their respective models.
Components listed below are also available as spares.

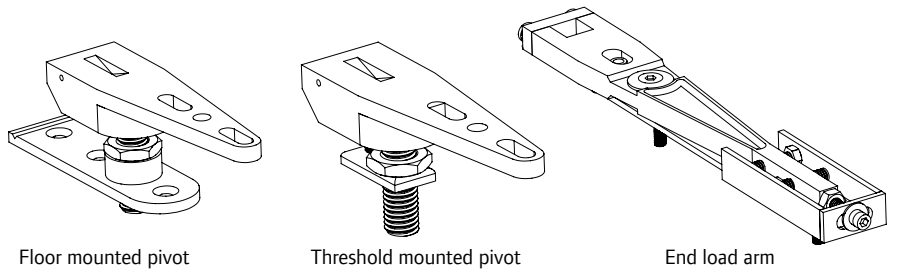
Side Load Arm and DP Pivot Kit – 2800.SLP

Side load arm to suit 16 mm recessed metal top rail. Pivot has adjustable height and capacity up to 80 kg door weight. Kit includes components to configure pivot to suit floor mounting or threshold mounting.



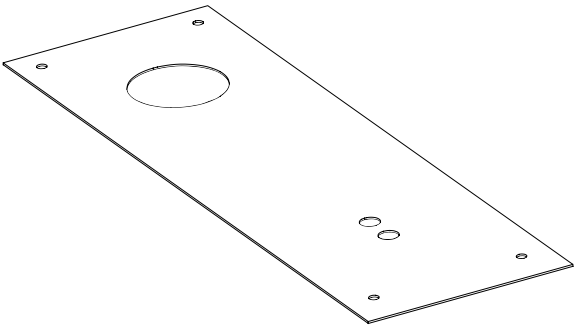
End Load Arm and AP Pivot Kit – 2800.ELP

End load arm to suit 16 mm recessed metal top rail. Pivot has adjustable height and capacity up to 80 kg door weight. Kit includes components to configure pivot to suit floor mounting or threshold mounting.



Cover Plate – 2800.CPT.SE

Aesthetic cover plate for timber applications.



Sample Specifications

2800 Series

BRITON 2800

Non-handed and power adjustable (wind through), all weather fluid, closing and latch speed adjustment using tamper resistant valves. Steel piston and cast iron construction concealed within a 41 mm x 95 mm metal header or 75 mm x 127 mm timber header to suit door thickness of 37 mm (metal recess) or minimum 44 mm (timber).

Optional features include:

- 90° Hold-Open
- End Load Arm
- Side Load Arm
- Cover Plate

Briton 2800 Series Concealed Door Closers can also be fitted to timber doors and hollow metal doors